

## PREPARING FOR USE

### WHAT'S IN THE BOX?

Let's check and make sure you have everything. Germ Shield UV Toothbrush Sanitizer checklist:

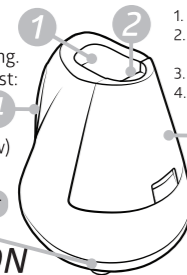
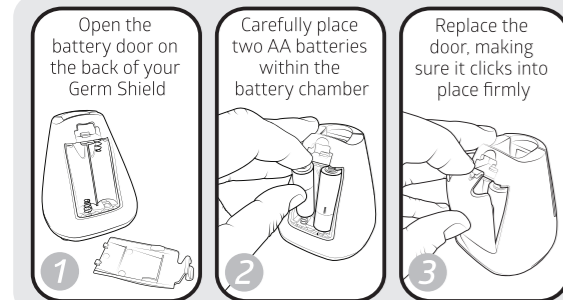
- Germ Shield Toothbrush UV Sanitizer
- Instruction manual (you're looking at it now)

UV indicator light and low battery indicator

### BATTERY INSTALLATION

Time to wake up and feed your Germ Shield.

**ATTENTION** - MAKE SURE THE BATTERIES ARE IN THE RIGHT ORIENTATION  
**HINT** - THE FLAT SIDE OF THE BATTERY SHOULD BE AGAINST THE SPRING

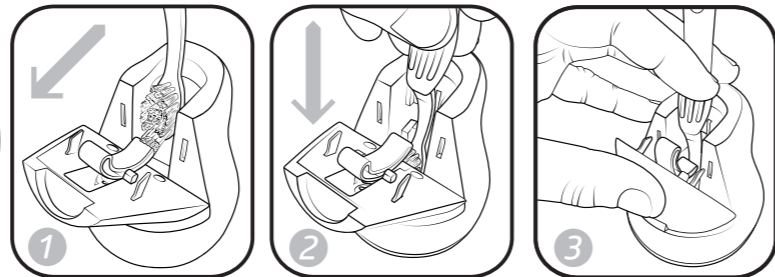


## DIRECTIONS FOR USE

### HOW TO SANITIZE YOUR TOOTHBRUSH

**TO ENSURE YOUR GERM SHIELD UV SANITIZER PERFORMS ITS TASKS PERFECTLY, PLEASE MAKE SURE YOUR GERM SHIELD IS PLACED ON A CLEAN, FLAT HORIZONTAL SURFACE.**

**ATTENTION** - ALWAYS RINSE THE BRUSH HEAD AND REMOVE EXCESS WATER BEFORE USING GERM SHIELD.



Open the UV Sanitizer door

1. With the door open towards you, place your toothbrush (electric or manual) within the Germ Shield UV Sanitizer core

**ATTENTION** - ALWAYS MAKE SURE THE BRISTLES OF YOUR BRUSH HEAD FACE THE GERM SHIELD DOOR

2. Make sure the bristles are inserted to the bottom of Germ Shield.  
 3. Gently close the Germ Shield UV Sanitizer door until it snaps shut. The door will clamp your toothbrush firmly in place and automatically activate the UV lamp deep within its core.

### SANITIZING

The Germ Shield encloses your toothbrush and gets to work, zapping the baddies on your toothbrush head. The lamp's UV-C rays destroy the DNA of pathogens with germ-killing light.

As the sanitizing cycle begins, the indicator light on the outside glows a pleasing blue while the UV is working. Each sanitizing cycle is 4 minutes, ensuring a deep satisfying clean. After the cycle finishes, the indicator light will switch off.



### TWO-YEAR WARRANTY

The Germ Shield Toothbrush UV Sanitizer is warranted against defects in materials or workmanship for two years for the original purchaser from the date of purchase. It does not cover damages or wear resulting from the accident, misuse, abuse, commercial use, or unauthorized adjustment and/or repair. Please note: it does not cover wear of the toothbrush heads.

There are no expressed warranties except as listed above. This warranty gives you specific legal rights, and you may have other rights, which vary from state to state.

Should your Germ Shield Toothbrush UV Sanitizer require service (or replacement at our option) while under warranty, do not return to the retailer.

Please contact our customer service at TAO Clean. Our friendly staff are trained to help you. If your Germ Shield needs to be returned, we will arrange a return label.

For human assistance, please call +1-714-363-3599 or email: [support@taoclean.com](mailto:support@taoclean.com)



taoclean.com

For assistance call or text: +1-714-363-3599 email: [support@taoclean.com](mailto:support@taoclean.com)

© 2026 TAO Clean. Germ Shield is a registered Trademark of TAO Clean. All rights reserved. No part of this book may be reproduced, stored in a retrieval system or transmitted in any form or by any means, electronic, mechanical or otherwise, without written permission of the copyright owners.

PRINTED IN CHINA



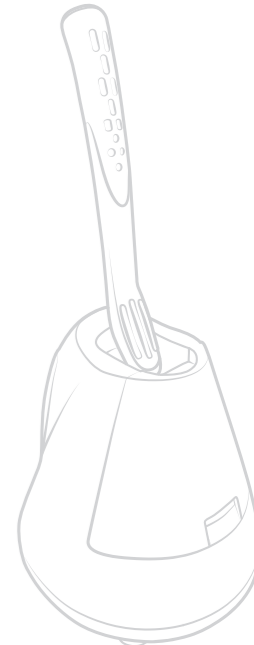
### TRAVEL TOOTHBRUSH UV SANITIZER



**NEED HELP WITH ANYTHING?  
WE WANT TO HELP!**

**TALK TO A HUMAN 714.363.3599**

We are open Mon-Fri 9-5 PST or email us [support@taoclean.com](mailto:support@taoclean.com)





## Travel Toothbrush UV Sanitizer

### WELCOME TO A NEW ERA OF SANITIZING

Congratulations on finding your new family friend, the Germ Shield Toothbrush Sanitizer. We salute you for taking the time to read this instruction sheet to ensure the best of our new relationship. We want to get you up and running as fast as possible, so let's jump right in.

Germ Shield has been lovingly designed and made to serve you loyally everyday. We aim to help keep you and your family healthy and your toothbrushes meticulously sanitized, so please excuse the formality of introducing some essential safeguards before we get underway.



 When using electrical devices, basic safety precautions should always be followed 

**ATTENTION** Children shall not play with the device.

Children shall not clean or carry out user maintenance without adult supervision. Thank you.



This appliance can be used by children from 8 years of age so long they are supervised or have been given instructions concerning the use and operation of the device in a safe manner. The child must understand misuse of the device could be dangerous, harmful and hazardous to the child's health and safety.

**DANGER** This appliance contains a UV emitter. Do not stare at the light source. UV light can be harmful to the human eye and skin.

**WARNING** Only use new AA batteries to avoid damaging the device or cause harm to yourself. No exceptions. Thank you.

If the device is damaged in any way stop using it.

In case of any mechanical failure within the warranty period, please return your TAO Clean system for service. Do not attempt to dismantle. Dismantling the device will void the warranty.

**ATTENTION** This device contains no serviceable parts. If the appliance is damaged, contact the TAO Clean customer care for assistance, please text or call +1 (714) 363-3599 or email: [Support@taoclean.com](mailto:Support@taoclean.com)



This device has been designed only for sanitizing toothbrushes. Do not use it for any other purpose.

Germ Shield Toothbrush UV Sanitizer was designed for personal use.

Do not put the Germ Shield Toothbrush UV Sanitizer in the dishwasher.

**NOTE**

THIS EQUIPMENT HAS BEEN TESTED AND FOUND TO COMPLY WITH THE LIMITS FOR A CLASS B DIGITAL DEVICE, PURSUANT TO PART 15 OF THE FCC RULES. THESE LIMITS ARE DESIGNED TO PROVIDE REASONABLE PROTECTION AGAINST HARMFUL INTERFERENCE IN A RESIDENTIAL INSTALLATION.

THIS EQUIPMENT GENERATES, USES AND CAN RADIATE RADIO FREQUENCY ENERGY AND, IF NOT INSTALLED AND USED IN ACCORDANCE WITH THE INSTRUCTIONS, MAY CAUSE HARMFUL INTERFERENCE TO RADIO COMMUNICATIONS. HOWEVER, THERE IS NO GUARANTEE THAT INTERFERENCE WILL NOT OCCUR IN A PARTICULAR INSTALLATION. IF THIS EQUIPMENT DOES CAUSE HARMFUL INTERFERENCE TO RADIO OR TELEVISION RECEPTION, WHICH CAN BE DETERMINED BY TURNING THE EQUIPMENT OFF AND ON, THE USER IS ENCOURAGED TO TRY TO CORRECT THE INTERFERENCE BY ONE OR MORE OF THE FOLLOWING MEASURES:

- REORIENT OR RELOCATE THE RECEIVING ANTENNA.
- INCREASE THE SEPARATION BETWEEN THE EQUIPMENT AND RECEIVER.
- CONNECT THE EQUIPMENT INTO AN OUTLET ON A CIRCUIT DIFFERENT FROM THAT TO WHICH THE RECEIVER IS CONNECTED.
- CONSULT THE DEALER OR AN EXPERIENCED RADIO/TV TECHNICIAN FOR HELP.

CHANGES OR MODIFICATIONS TO THIS UNIT NOT EXPRESSLY APPROVED BY THE PARTY RESPONSIBLE FOR COMPLIANCE COULD VOID THE USER'S AUTHORITY TO OPERATE THE EQUIPMENT.

## MAINTENANCE KEEP IT CLEAN

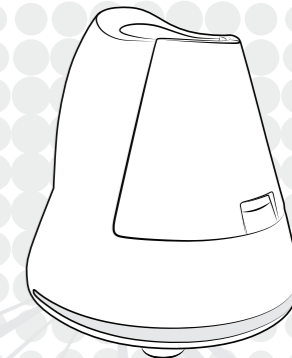
Essential Cleanliness Maintenance routines keep the Germ Shield Toothbrush UV Sanitizer Clean

We do recommend cleaning once a week to ensure tip-top condition. Remove the batteries. Use a soft cloth. Wrap the fabric around your finger like so (see diagram no. 1). Carefully run your finger around the bottom (see no. 2) and do the same around the core entrance hole and door (see no. 3).



## ATTENTION PLEASE! LOW BATTERY WARNING

When the indicator light glows red, don't be alarmed, it's time to replace your batteries. The red alert only triggers and pulses when the battery is low. Think of it as, "Please feed me."



To replace batteries, read the section "BATTERY INSTALLATION." You'll be back up and running in no time.