

T A O clean



For more information or replacement brushes visit us at taoclean.com



Call or text: +1-714-363-3599



Email: support@taoclean.com

Please Note:

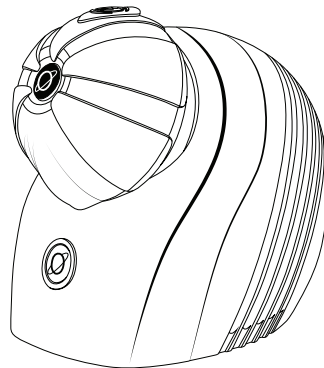
This equipment has been tested and found to comply with the limits for a Class B digital device, pursuant to part 15 of the FCC Rules. These limits are designed to provide reasonable protection against harmful interference in a residential installation.

This equipment generates, uses and can radiate radio frequency energy and, if not installed and used in accordance with the instructions, may cause harmful interference to radio communications. However, there is no guarantee that interference will not occur in a particular installation. If this equipment does cause harmful interference to radio or television reception, which can be determined by turning the equipment off and on, the user is encouraged to try to correct the interference by one or more of the following measures:

- Reorient or relocate the receiving antenna.
- Increase the separation between the equipment and receiver.
- Connect the equipment into an outlet on a circuit different from that to which the receiver is connected.
- Consult the dealer or an experienced radio/TV technician for help.

Changes or modifications to this unit not expressly approved by the party responsible for compliance could void the user's authority to operate the equipment.

onaGO
FACIAL BRUSH
with
germshield



USER MANUAL

IMPORTANT

**READ THIS USER MANUAL CAREFULLY BEFORE YOU USE THE DEVICE.
ALSO, PLEASE SAVE IT FOR YOUR FUTURE REFERENCE.**





CONTACT

For assistance
call or text: +1-714-363-3599

T A C clean © 2022

All rights reserved. No part of this book may be reproduced, stored in a retrieval system, or transmitted in any form or by any means, electronic, mechanical, or otherwise, without written permission of the copyright owners.

This device complies with Part 15 of the FCC Rules. The operation of this device is subject to the following two conditions: (1) this device may not cause harmful interference, and (2) this device must accept any interference received, including interference that may cause undesired operation.

onaGO
with
germshield

WELCOME TO A NEW ERA OF CLEANLINESS

Congratulations on your new Ona Go Facial Brush.
You've made a smart investment in skincare, and we are so happy and grateful you chose our system.

We have worked night and day to design our latest facial brush and we want you to love it. To get you up and running as fast as possible and ensure the best from your Ona Go Facial Brush and UV sanitizer, please take a moment to read these instructions.

What follows are steps to help you understand how to charge your system, operate and keep it maintained to ensure the best performance for superior results, and some technical information, just in case you love engineering as much as we do.

 **ATTENTION** 

WHEN USING ELECTRICAL DEVICES, BASIC SAFETY PRECAUTIONS SHOULD ALWAYS BE FOLLOWED

USB POWER ADAPTER NOT INCLUDED. USE WITH A POWER ADAPTER RATED AT 5V - 1A OR ABOVE

CHILDREN SHALL NOT PLAY WITH THE DEVICE.

CHILDREN SHALL NOT CLEAN OR CARRY OUT USER MAINTENANCE WITHOUT ADULT SUPERVISION. THANK YOU.

THIS APPLIANCE CAN BE USED BY CHILDREN FROM 8 YEARS OF AGE SO LONG THEY ARE SUPERVISED OR HAVE BEEN GIVEN INSTRUCTIONS CONCERNING THE USE AND OPERATION OF THE DEVICE IN A SAFE MANNER. THE CHILD MUST UNDERSTAND MISUSE OF THE DEVICE COULD BE DANGEROUS, HARMFUL AND HAZARDOUS TO THE CHILD'S HEALTH AND SAFETY.

 **DANGER** 

THIS APPLIANCE CONTAINS A UV EMITTER. DO NOT STARE AT THE LIGHT SOURCE.

UV LIGHT CAN BE HARMFUL TO THE HUMAN EYE AND SKIN.

NEVER FORCE THE USB CABLE INTO AN OUTLET.

IF THE USB CABLE DOES NOT EASILY FIT INTO THE OUTLET AND/OR MICRO USB TO THE HANDLE, DISCONTINUE USE AND CONTACT TAO CLEAN FOR SERVICE. THANK YOU.

CONTACT THE TAO CLEAN CUSTOMER CARE FOR ASSISTANCE, PLEASE TEXT OR CALL +1 (714) 363-3599 OR EMAIL: SUPPORT@TAOCLEAN.COM

 **DANGER** 

DO NOT PLUG THE HANDLE INTO AN OUTLET WITH A VOLTAGE OR FREQUENCY OTHER THAN SPECIFIED ON THE CHARGER. PLEASE BE AWARE VOLTAGE CONVERTERS DO NOT GUARANTEE VOLTAGE COMPATIBILITY. SO BE VIGILANT AND MOST OF ALL BE SAFE.

 **WARNING** 

IF THE DEVICE IS DAMAGED IN ANY WAY (BRUSH HEAD, FACIAL BRUSH HANDLE, AND/OR SANITIZER), STOP USING IT.

IN CASE OF ANY MECHANICAL FAILURE WITHIN THE WARRANTY PERIOD, PLEASE RETURN YOUR TAO CLEAN SYSTEM FOR SERVICE. DO NOT ATTEMPT TO DISMANTLE. DISMANTLING THE DEVICE WILL VOID THE WARRANTY.

THIS DEVICE CONTAINS NO SERVICEABLE PARTS. IF THE APPLIANCE IS DAMAGED, CONTACT THE TAO CLEAN CUSTOMER CARE FOR ASSISTANCE, PLEASE TEXT OR CALL +1 (714) 363-3599 OR EMAIL: SUPPORT@TAOCLEAN.COM

IN CASE OF ANY MECHANICAL FAILURE WITHIN THE WARRANTY PERIOD, PLEASE RETURN YOUR TAO CLEAN SYSTEM FOR SERVICE. DO NOT ATTEMPT TO DISMANTLE. DISMANTLING THE DEVICE WILL VOID THE WARRANTY.

THIS DEVICE CONTAINS NO SERVICEABLE PARTS. IF THE APPLIANCE IS DAMAGED, CONTACT THE TAO CLEAN CUSTOMER CARE FOR ASSISTANCE, PLEASE TEXT OR CALL +1 (714) 363-3599 OR EMAIL: SUPPORT@TAOCLEAN.COM



CAUTION



WE DESIGNED YOUR ONA TO CLEAN YOUR SKIN LOVINGLY. PLEASE AVOID CONTACT WITH YOUR EYES AND RINSE THOROUGHLY IF YOU ACCIDENTALLY GET CLEANING PRODUCT IN YOUR EYE. IF YOU ARE UNDER A DOCTOR'S CARE FOR ANY SKIN CONDITION OR THINK YOU MAY HAVE A SKIN CONDITION, PLEASE CONSULT YOUR PHYSICIAN BEFORE USING THE ONA GO FACIAL BRUSH. SOME SKIN SENSITIVITY MAY DEVELOP DUE TO YOUR SKIN ADJUSTING TO THE BRUSH'S DEEP CLEANING ACTION.

IF REDNESS APPEARS, IT MIGHT BE CAUSED BY PRESSING TOO HARD. PLEASE REFER TO PAGE 20 USING THE DEVICE BRUSHING TECHNIQUE SECTION FOR MORE INFORMATION.

YOUR ONA GO FACIAL BRUSH DESIGN ENHANCES THE CLEANING POWER OF YOUR FAVORITE CLEANSER. IF THIS IS YOUR FIRST TIME USING A MOTORIZED FACIAL BRUSH, WE RECOMMEND THAT YOU START WITH THE BRUSH HEAD OPTIMIZED FOR GENTLE DAILY USE.

DO NOT USE THE ONA GO FACIAL BRUSH WITH JAGGED EXFOLIATING PARTICLES SUCH AS SHELLS, METALS, OR CERAMICS. WE RECOMMEND THE STIFFER EXFOLIATOR BRUSH HEAD (SOLD SEPARATELY) ALONG WITH YOUR FAVORITE GENTLE CLEANSER FOR PERIODIC EXFOLIATING.

ATTENTION

This device has been designed only for cleaning the face and skin. Do not use it for any other purpose. Stop using the appliance and contact your doctor if you experience any discomfort or pain.

**Ona Go was designed for personal use.
We do not recommend that you share the brush heads.**

**We want to keep you clean. We want to keep you healthy.
Most importantly, we want to keep you that way.**

Using the Ona Go Facial Brush to remove makeup may stain the bristles, but will not affect performance. If discoloration occurs, clean the brush head with soap and water.

Do not put the brush head, the handle, the charger, and/or the sanitizer in the dishwasher.

**These instructions are also available in pdf from our website:
www.taoclean.com/manuals**

FEATURES

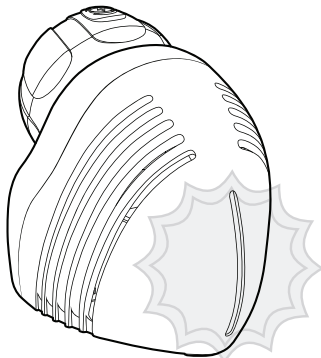
CHARGING MODE

germ shield

Germ Shield technology delivers the maximum level of sanitization. We designed the UV sanitizer to protect and enclose the facial brush from environmental pollutants coupled with the UV-C lamp to sanitize the facial brush.

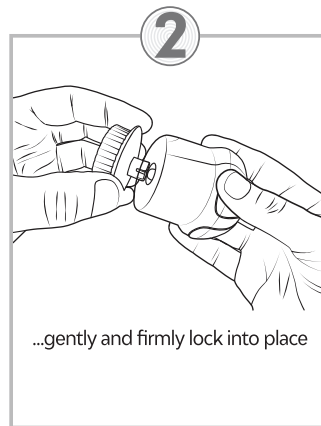
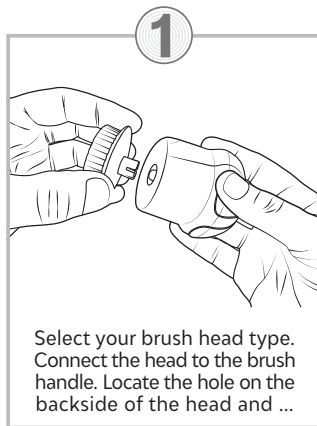
The UV-C light bulb helps kill germs on the brush head, keeping your toothbrush clean; drop the handle in the cleaning station and let it do its thing.

The light will glow blue as the cleaning cycle begins and slow pulse. After 4 minutes, the light will switch off.



PREPARING FOR USE

BRUSH ASSEMBLY



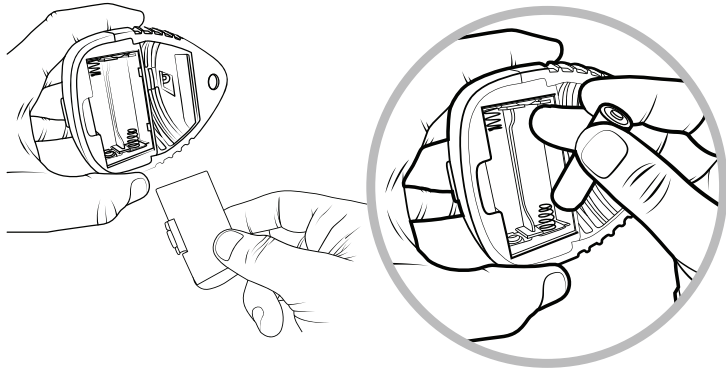
Replace brush heads every three months or sooner to achieve the best results.

ATTENTION
**USE ONLY OFFICIAL TAO CLEAN
REPLACEMENT BRUSH HEADS.**

Fakes won't get the job done.

PREPARING FOR USE

POWERING YOUR BASE



To power your base, use the AA batteries provided. Next, invert and find the removable door. Open and add the batteries, taking care of the orientation. Replace the door, and the device is ready to use.

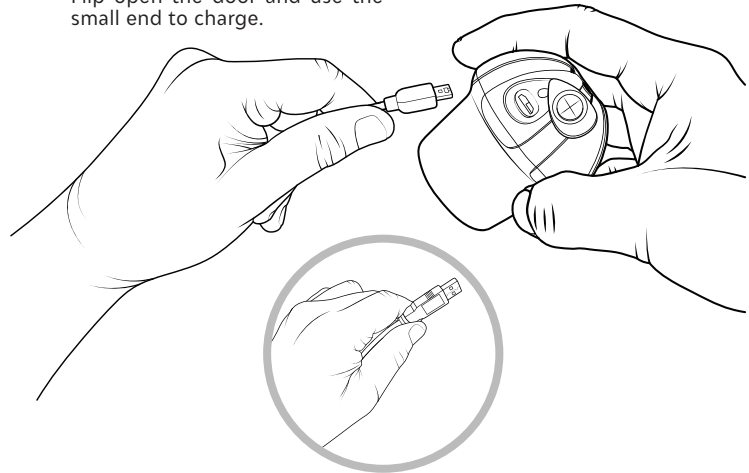
ATTENTION

**PLEASE ENSURE THE CORRECT
BATTERY ORIENTATION TO
ACTIVATE THE BASE.**

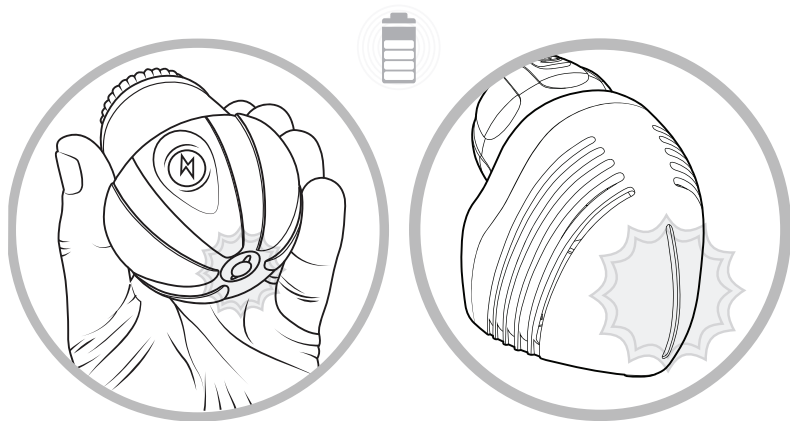
PREPARING FOR USE

CHARGING YOUR HANDLE

To charge your handle, use the USB cable provided. Find the Micro-USB port under the petal cover at the end of the handle. Flip open the door and use the small end to charge.



ATTENTION LOW BATTERY



Ona Go has a low-battery indicator in both the base and the handle.

If it's flashing red on the handle, it can still be used in low-power mode but will need charging as soon as possible. Likewise, please replace the batteries when the base light starts flashing red.

DIRECTIONS FOR USE APPLYING PRODUCT

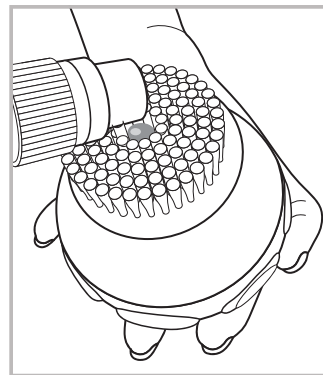
To prepare the brush for use, make the brush bristles wet and apply a small amount of your favorite cleanser.

Within the center of the brush head is a small "product well." Use this to hold and measure the amount of product you wish to use.



Using the "product well" to measure product equally each day is a useful way to keep track of product use.

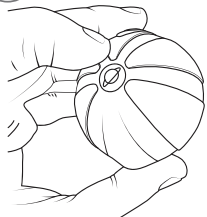
The trick is to not overdo it. Your facial brush will whip up a small amount of your favorite cleanser into a fine lather.



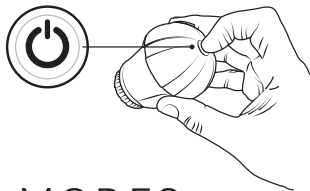
DIRECTIONS FOR USE

ACTIVATING THE BRUSH

- 1** Remove the handle from the cleaning station.



- 2** Apply product (see the previous page). Press the power button and select your mode.



BRUSHING MODES

Your Ona Go Brush Handle has two cleaning modes. **Super Clean Mode** & **Sensitive Clean Mode**. **Super Clean Mode** is our standard for cleaning the skin.

You can access **Sensitive Clean Mode** by pressing the power button twice. **Sensitive Clean Mode** offers a slower yet thorough cleaning experience for sensitive skin.

Press again for **Super Clean Mode**.

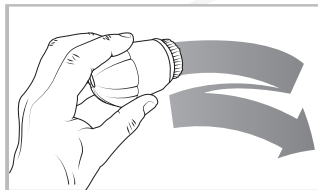


ATTENTION

TO STOP, WAIT THREE SECONDS AND PRESS THE POWER BUTTON

USING THE DEVICE

BRUSHING MOTION



ATTENTION

NOW GENTLY PLACE THE FACIAL BRUSH BRISTLES AGAINST THE FACE, FLAT ON THE SKIN. NEVER PRESS HARD OR FORCE THE BRISTLES INTO YOUR SKIN.

The ergonomic facial brush handle is designed for your comfort and to be gripped like a baseball.

Hold it firmly but always gently on your face.

Press the power button and fire up the engine of the brush. Sounds great, doesn't it?

Move the brush in a sweeping motion, carefully gliding across the skin area, allowing the brush to do the cleaning.

Allow the spinning movement of the brush and bristles do all the hard work. Trust your brush. It will do all the brushing for you.

ATTENTION

THERE ARE VERY DELICATE AREAS AROUND THE FACE. TRY TO AVOID THE EYE AND EYELID AREA. SOAP IN YOUR EYES CAN BE A PAINFUL EXPERIENCE, SO AVOID IT, PLEASE. IF YOU GET CLEANSER IN YOUR EYE, STOP THE BRUSH AND RINSE IMMEDIATELY.

BRUSHING TECHNIQUE

Rotational technology is a highly regarded and efficient alternative to manual washing. Its spinning nature gently sweeps through pores to safely dislodge debris, hygienically clean and efficiently polish the skin surface. Think of it as your dedicated army of personal assistants gently sweeping away with no fatigue.

Remember to select the appropriate brush type and pair with your favorite product, be it a cleanser, soap, or exfoliator. We recommend using the exfoliating brush once a week.

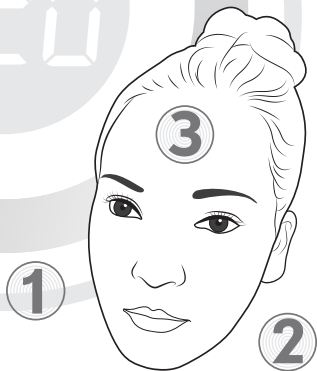
For an even and thorough cleansing of your face, your Ona Go features an integral timer that pauses momentarily to indicate it is time to move to another part of your face.

Your Ona Go Facial Brush has three 20 seconds intervals.

We've created a fun map of your face to demonstrate how to use the intervals.

Please study it. Your face is a beautiful landscape waiting to be explored.

You could say the brush is a helicopter waiting to fly around it, but we won't; it's just a brush. We will say your face is beautiful, though.

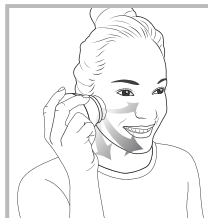


ATTENTION

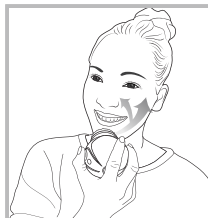
LEAVING YOUR FOREHEAD LAST WILL REDUCE THE POSSIBILITY OF PRODUCT SLIDING INTO YOUR EYES. PLEASE SWITCH THE BRUSH OFF AND RINSE IMMEDIATELY WITH CLEAN WATER IF ANY PRODUCT SUCH AS SOAP OR CLEANSER GETS INTO YOUR EYES.



Hold the brush head in place for a few seconds before sweeping on to the next area. It's saying hello and then goodbye.



1



2



3

Allow the brush to work the nooks and crannies too. Try to imagine yourself as an orchestra conductor guiding cleanliness around your face.

Sweep across each zone following the direction of the arrows in smooth movements forward & backward.

ATTENTION

KEEP YOUR HAIR BACK AND OUT OF THE WAY FROM THE BRUSH HEAD.

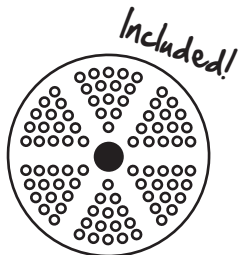
USING THE DEVICE

BRUSH TYPE

TAO Clean provides interchangeable brush heads, uniquely designed and engineered for specific skin types or conditions.

This set includes a Daily Care Head intended for everyday cleansing.

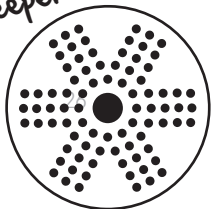
Here's a rundown of our specialist brushes.



DAILY CARE

Use every day for smoother skin.

Deeper clean!



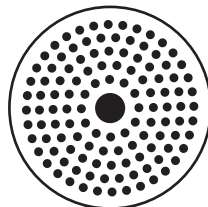
EXFOLIATOR

Use once weekly for radiant skin.



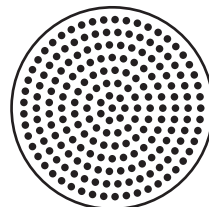
USING THE DEVICE

SPECIALIST HEADS



SENSITIVE

30% softer for gentle skin types.

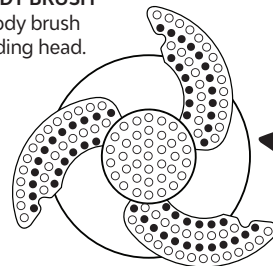


SILICONE

For the ultimate in clean.

EXPANDING BODY BRUSH

Soothing all-body brush with unique folding head.



All new brush!

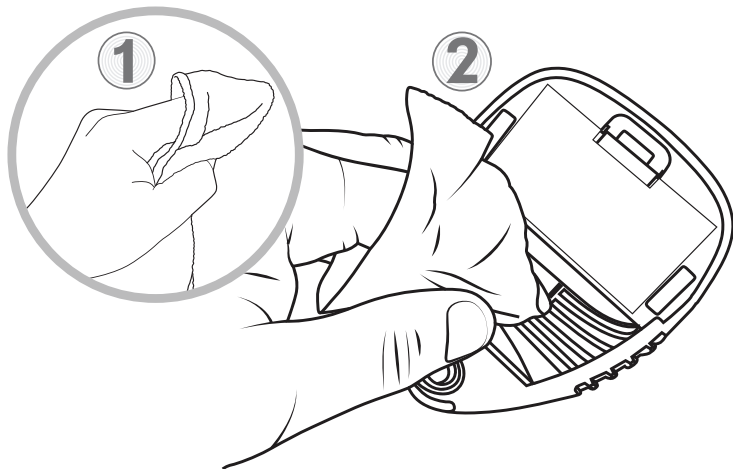
Visit our website www.taoclean.com for more details and replacements.

MAINTENANCE

BASE CLEANING

We do recommend cleaning once a week to ensure tip-top condition. Use a soft cloth. Wrap the fabric around your finger like so (see diagram no. 1).

Carefully run your finger around the bottom (see no. 2) and do the same around the top-docking hole.

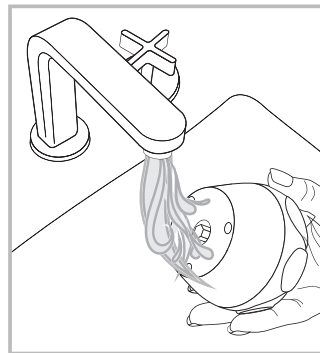


MAINTENANCE

BRUSH CLEANING

Please follow these easy to do maintenance routines to ensure your Ona Go Facial Brush is always in the very best condition.

Keeping to these routines will also ensure your system is always operating at its best.



Essential Cleanliness Maintenance Routines Keep the Ona Go Facial Brush clean

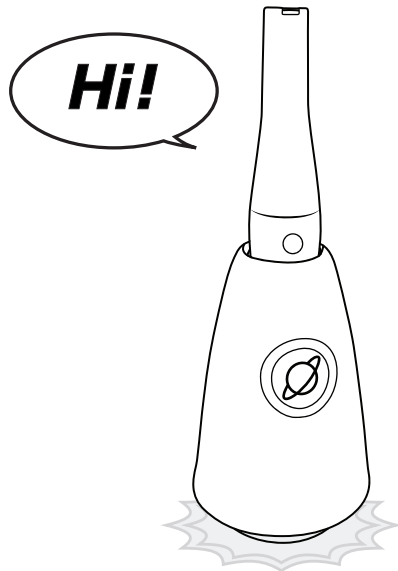
Always rinse the brush head and bristles after each use.

We recommend that you remove the brush head at least once a week and rinse the shaft area with warm water.

Be careful not to damage the seal on the shaft with sharp objects when you clean.

Time to update your maintenance routine?

Come take a look on our website for new ideas to improve old routines - taoclean.com



MAINTENANCE WARRANTY

Two year warranty

Your Ona Go is warranted against defects in workmanship and materials for two years for the original purchaser from the date of purchase. It does not cover damage or wear resulting from accidents, misuse, abuse, commercial use, or unauthorized adjustment and/or repair.

Please note: It does not cover wear of the brush heads.

There are no expressed warranties except as listed above. This warranty gives you specific legal rights, and you may have other rights which vary from state to state. Should your Ona Go require service (or replacement at our option) while under warranty, do not return to the retailer. Instead, please contact our customer service. Our friendly staff are trained to help you. If your Ona Go needs to be returned, we will arrange a return label.

For assistance: Text or call: +1 (714) 363-3599
Email: support@taoclean.com

